



M12 BI

SERVICE PARTS DIAGRAM

TTI Model Number: 016 088 008

M12™ COMPACT INFLATOR

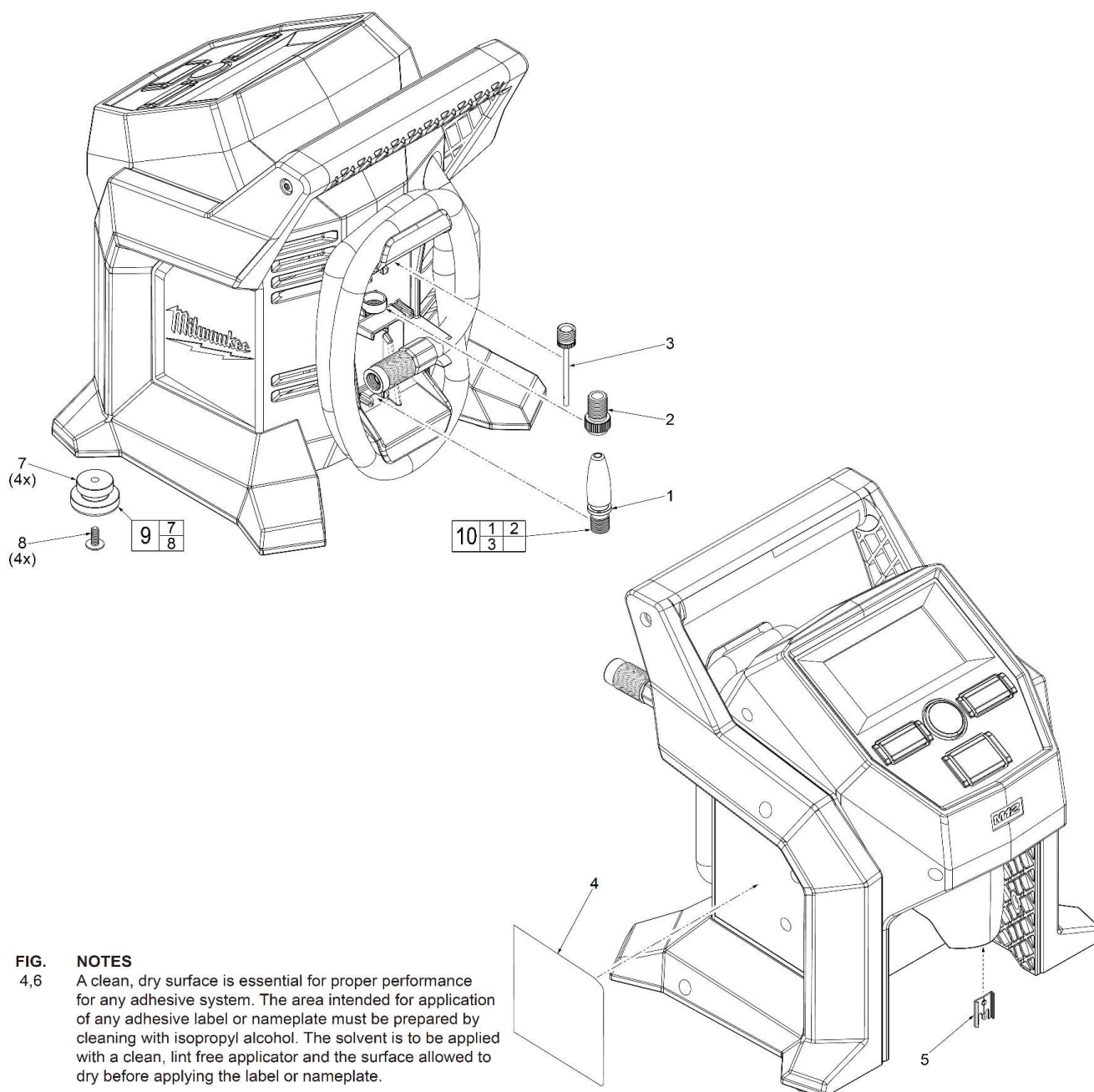
Bulletin Date:

Apr-20

Starting Serial Number:

VERSION A - K2018

00 0 EXAMPLE:
Component Parts (Small #) Are Included
When Ordering The Assembly (Large #).



	M12 BI SERVICE PARTS LIST	Bulletin Date: Apr-20
	TTI Model Number: 016 088 008 M12™ COMPACT INFLATOR	Starting Serial Number: VERSION A - K2018

ITEM	PART NUMBER	PART DESCRIPTION	QTY (PCS)
1	-	INFLATING NOZZLE	1
2	-	NOZZLE ADAPTER	1
3	-	INFLATING PIN	1
4	01608800802K	SERVICE NAMEPLATE	1
5	631542003	HOUSING CONNECTION CLIP	1
7	-	RUBBER FOOT	4
8	-	SCREW	4
9	016088001001	FOOT/SCREW SERVICE KIT	1
10	016088008001	INFLATING ATTACHMENT KIT	1